

*Benefitting Mental &  
Behavioral Health  
Awareness  
in Rhode Island*

**PARTNERSHIP  
OPPORTUNITIES**



**July 14 & 15, 2023**

# EVENT SUMMARY & PURPOSE

---

In June 2020, Toby O'Brien from [Overspeed Hockey](#) joined the HHP Communications meeting to present his idea for a hockey event that would not only raise funds for Horizon Healthcare Partners' members, but also raise awareness about upholding mental health across the state.

**"We want to partner with the Rhode Island mental health community to present an event that will bring not just awareness, but also action to build programs that help identify issues and present ways to get help, especially among teenage/high school age athletes."**

**Toby O'Brien**

Similar to Boston's "Commonwealth Avenue Classic", Check the Stigma aims at awareness and resource training for high school/youth coaches. The game will consist of professional players who attended Providence College, Brown University, played for the Providence Bruins, are RI residents playing pro or Division 1 NCAA hockey, the Premier Hockey Federation (formerly the National Women's Hockey League), famous coaches and celebrities.

This high-profile event gives Horizon Health Partners a unique opportunity to engage people with two fun venues, while making a case for knowing the signs of mental health problems, reaching out, and knowing where to begin to get help when needed.



## **Fundraising Weekend Activities**

- **Friday Night Waterfire Event**
- **Hockey Classic Legends Game**
  - Meet & greet players, coaches and other celebrities
  - Chuck-a-Puck sales, 50/50 sales, silent auction, sponsor giveaways
  - Food Trucks
  - Game with warm up, ceremonial puck drop, national anthem



# BENEFICIARY

## HORIZON HEALTHCARE PARTNERS

*A consortium of seven agencies serving the behavioral health needs of Rhode Islanders from Woonsocket to Westerly and the cities and towns in-between*



### Our Members:



## COACHES & LEADERS



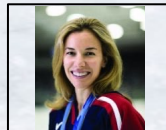
**TOBY O'BRIEN-EVENT FOUNDER**  
*Former NHL Scouting Director/Scout/Coach; current owner of OverSpeed Hockey; Newport, RI resident*



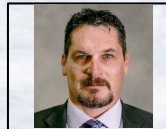
**BRIAN BOUCHER**  
*Long-time NHL player; ESPN's Voice of the NHL RI native; Jamestown, RI resident*



**TOM FITZGERALD**  
*General Manager NHL New Jersey Devils; long-time NHL player; Providence College alumnus*



**SARAH DECOSTA-HAYES**  
*Two-time Olympic medalist (Gold & Silver); USA Hockey Player of the Year; Director of RI Sting Girls Hockey; Warwick, RI native, Middletown, RI resident*



**TRENT WHITFIELD**  
*Former NHL player (teams); former AHL player (teams); current Assistant Coach AHL Providence Bruins; Warwick, RI resident*



**CHRISTINA PUTIGNA**  
*Assistant Captain Boston Pride; former member of Team Canada; Providence College alumna*



## Exhibition Roster

**Noel Acciari / Toronto Maple Leafs**

**Garnet Hathaway / Boston Bruins**

**Tim Schaller / Bruins, Sabres, Canucks, Kings**

**Bobby Farnham / Penguins, Devils, Canadiens**

**Brian Flynn / Sabres, Canadiens**

**Tommy Cross / Bruins**

**Josh Hennesy / Bruins**

**Brett Berard / Providence College (Rangers)**

**Dennis Cesana / Charlotte Checkers (Panthers)**

**Brady Berard / Providence College**

**Ryan Fitzgerald / Lehigh Valley (Flyers)**

**Parker Ford / Providence College (Jets)**

**Zach Giuttari / Abbotsford (Canucks)**

**Mike Callahan / Providence (Bruins)**

**Dom Franco / Charlotte Checkers (Panthers)**

**Janine Weber / Connecticut Whale**

**Hayley Lunny / Metropolitan Riveters**

**Scott Pooley / IF Björklöven**

**Tim Doherty / Maine Mariners**

**Brian Lemos / Indy Fuel**

**Mike Lombardi / Quinnipiac University**

**Matt Salhanny / Alborg Pirates**

*more signings coming soon!*



**JULY 15, 2023**

**PUCK DROP 5:30PM**

**PC's SCHNEIDER ARENA**

[www.ChecktheStigma.org/tickets](http://www.ChecktheStigma.org/tickets)

@ChecktheStigma on social



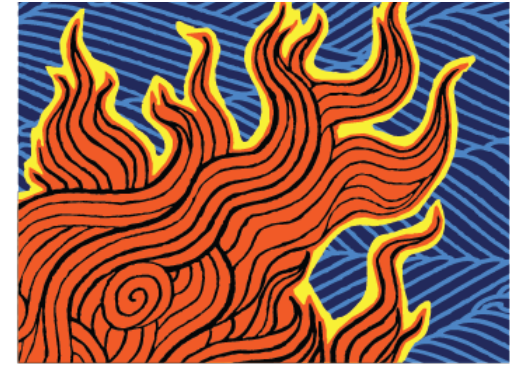
# Check the Stigma Hockey Classic Game Day Summary

- On Saturday July 15, 2023, two teams of Rhode Island hockey legends will take the ice at Schneider Arena on the campus of Providence College for an action-packed game with exciting activities for fans including chuck-a-puck, 50/50 tickets, meet and greets, and giveaways. There will be opportunities to learn how to help check the stigma surrounding mental and behavioral health.
- Proceeds from the game will benefit Horizon Healthcare Partners and its seven agencies around the state with a focus on providing resources and support to parents, coaches and schools about mental health awareness.



# Check the Stigma Hockey Classic Waterfire Event Summary

- On Friday July 14<sup>th</sup>, a special pre-season Basin Lighting will kick off our Check the Stigma Hockey Fundraising Weekend.
- Hospitality at The Skyline Restaurant will be included with sponsorship packages. Individual tickets will also be sold.
- The lighting will begin after sunset (8:18pm.) and the fires will remain lit until 10:00 p.m. Visitors are invited to come early and speak with mental and behavioral health agencies, enjoy live music, and participate in the torch ceremony and fire lighting from the WaterFire boat.
- We are inviting the hockey legends and professionals, our agencies, sponsors and the rest of Rhode Island to enjoy a meaningful, and unforgettable WaterFire at the basin.



**WATERFIRE**  
**PROVIDENCE**



# Presenting Sponsorship

## \$15,000 each *(Four Available)*

---

- Logo Inclusion on all event marketing materials
- Logo on the website
- Dasher Board Signage
- Logo on the rotating scoreboard
- Twenty General Admission Tickets
- Six (6) Tickets to Meet & Greet with players and legends
- Six (6) Premier location tickets to the Hockey Game
- Six (6) Hospitality passes at the Hockey Game
- Brand Activation at Hockey Game
- Four (4) tickets to Waterfire Hospitality and Event
- Booth at the Hockey Event
- One Booth space at the WaterFire Event



# Gold Sponsorship

\$5,000 each *(Four Available, Two Sold)*

---

- Logo Inclusion on all event marketing materials
- Logo on the website
- Dasher Board Signage
- Logo on Rotating Scoreboard
- Twenty Regular Admission tickets to the Event
- Four (4) Tickets to Meet & Greet with players and legends
- Four (4) Premier location tickets to the Hockey Game
- Four (4) Premier location Hospitality passes at the Hockey Game
- Two (2) tickets to WaterFire Hospitality





# Silver Sponsorship

\$2,500 each *(Ten Available)*

---

- Logo Inclusion on all event marketing materials
- Logo Inclusion on website
- Rotating logo on scoreboard
- Ten (10) Tickets to the Hockey Game
- Two (2) Tickets to Meet & Greet with players and legends
- Two (2) Premier location tickets to the Hockey Game
- Two (2) Hospitality passes at the Hockey Game
- Two (2) tickets to WaterFire Hospitality



# Bronze Sponsorship

\$1,000 (*Twenty Available*)

---

- Recognition by our announcer of your company or school's group during the game
- Logo Inclusion on the website
- Twenty (20) Tickets to the Hockey Exhibition
- Two VIP tickets with hospitality and meet and greet (can use for a school auction or fundraiser)
- Rotating Logo on the Scoreboard



